



# Reactor™ Spray Foam and Polyurea Equipment

For fast-set plural-component applications



PROVEN QUALITY. LEADING TECHNOLOGY.

# Graco Has You Covered

## No matter what the application, Graco has the solution

Whether you're spraying foam or applying polyurea coatings, Graco Reactor® Plural-Component Systems help you get the job done with superior results. Available in air, electric or hydraulic technology – we have the right equipment to meet your needs.

## Which system is right for you?

Technology types: A = air; E = electric; H = hydraulic



Portable and  
Touch-up Systems



Entry-level  
Systems



Mid-production  
Systems



High-production  
Systems

Portable and Touch-up Systems		Entry-level Systems		Mid-production Systems		High-production Systems	
SPRAY FOAM APPLICATIONS	COATINGS APPLICATIONS	SPRAY FOAM APPLICATIONS	COATINGS APPLICATIONS	SPRAY FOAM APPLICATIONS	COATINGS APPLICATIONS	SPRAY FOAM APPLICATIONS	COATINGS APPLICATIONS
E-10	E-10hp	A-25 E-20	A-XP1 E-10hp E-XP1	E-30 H-30	E-XP2 H-XP2	H-40 H-50	H-XP3

### Three-Year Extended Warranty

We stand behind every piece of equipment we manufacture with one of the industry's strongest warranties. Spray with the confidence that you will probably never need to use Graco's warranty, but if you do – Graco Has You Covered.

Reactor 2 systems offer a three-year extended warranty on control modules, display module and electric motor (E-series only). See product manual for specific warranty details.



#### Turnkey Systems

SPRAY FOAM APPLICATIONS

COATINGS APPLICATIONS

E-30i

E-XP2i





# Understand Spray Performance

Performance charts with mix chamber choices

Use these charts to help identify the system that will work most efficiently with each mix chamber. Flow rates are based on a material viscosity of 60 cps. *See examples below.*

## How to use these charts

- Select spray pressure
- Select mix chamber or flow rate
- Choose equipment model

*Note: Darker shading includes equipment models shown in lighter shaded areas.*

## Spray Foam Example

Mix chamber: AR6060 (03)

Pressure: 85 bar (1250 psi)

Flow rate: 10 kg/min (22 lb/min\*)

**Reactors H-30, E-30, H-40, H-50**

## Coatings Example

Mix chamber: AR2929 (00)

Pressure: 105 bar (1500 psi)

Flow rate: 3,4 l/min (0.9 gpm\*)

**Reactors E-XP1, E-XP2, H-XP2, H-XP3, E-10hp**

*\*Output of flat tip will be slightly less than round equivalent*

## Applications

### Spray Foam

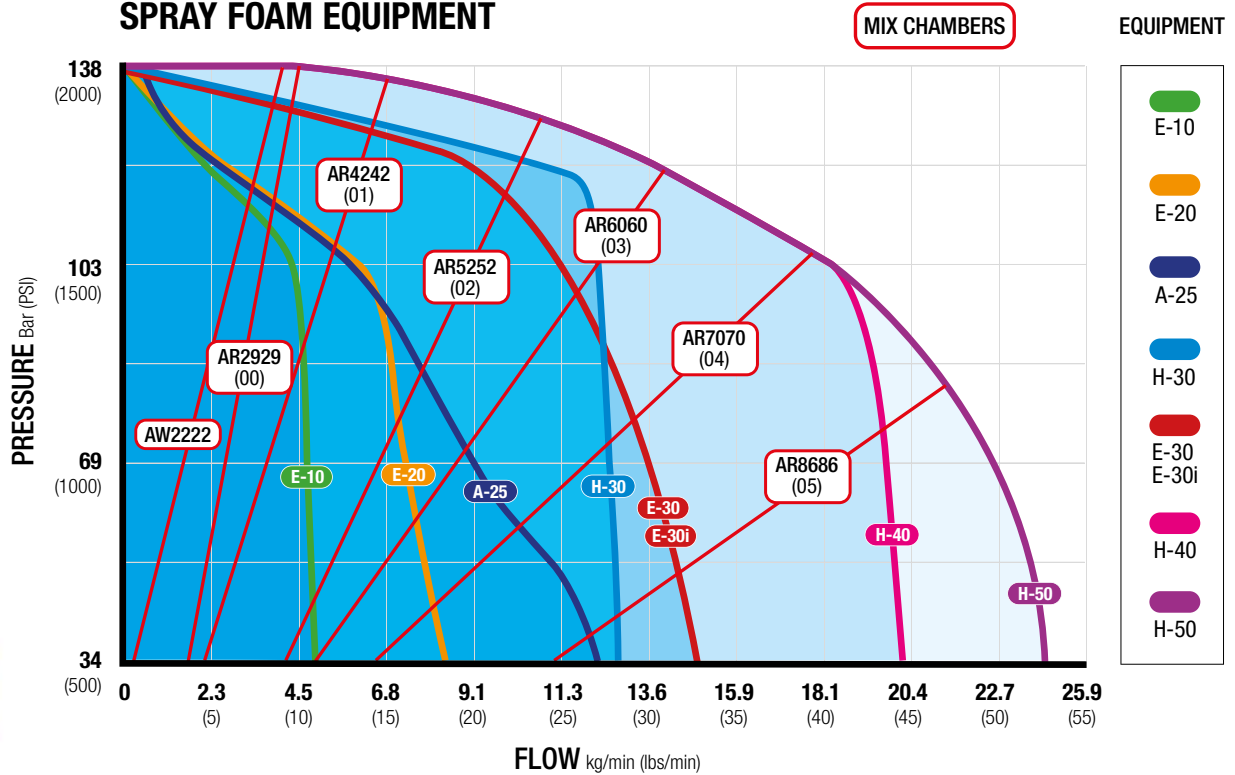
- Residential & commercial wall insulation
- Aerospace
- Concrete lifting
- Rim and band joist
- Roof insulation

### Protective Coatings

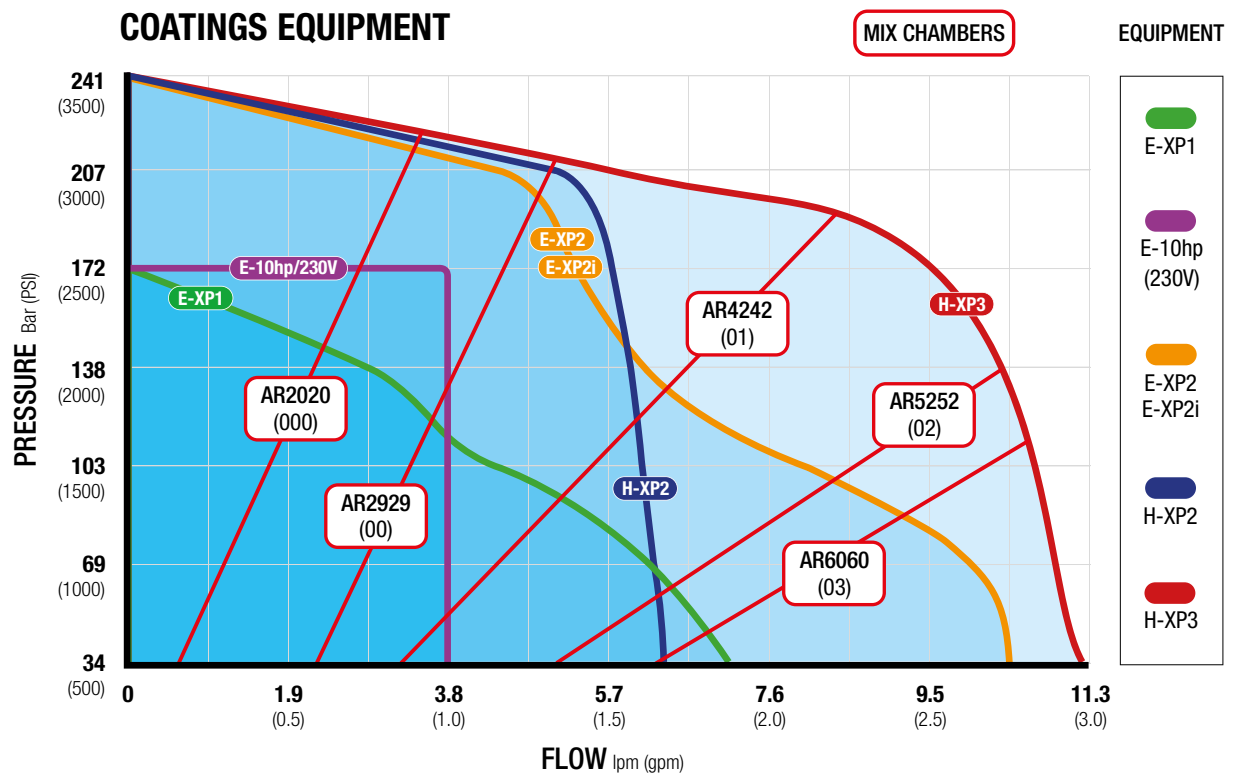
- Adhesive and caulking for flooring
- Decorative coatings
- Marine and shipbuilding
- Tank and pipe coating
- Waterproofing
- Wastewater treatment
- Truck bedliners



## SPRAY FOAM EQUIPMENT



## COATINGS EQUIPMENT



# Advancing the Industry

Like you, we want customers to be completely satisfied with their spray foam and coatings application investment. Graco's goal is to provide equipment advancements that help you and your crews apply materials more accurately and more efficiently – as the material suppliers intended, to help grow your business.

## Better control



### Advanced control technology

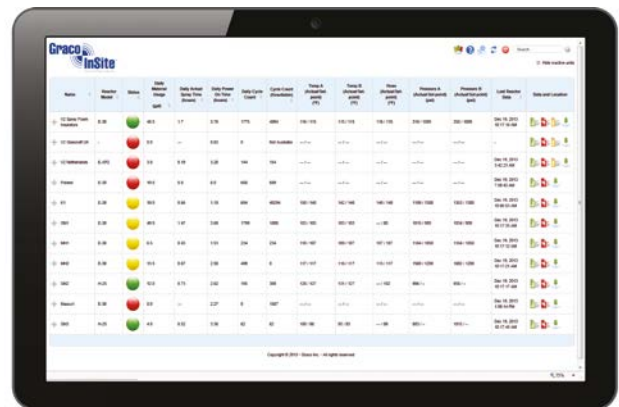
Advanced Display Module (ADM) is the standard interface for all Reactor 2 systems. With the ability to track, monitor and save project information, the ADM also has the ability to download data onto a USB drive for further analysis.

#### Screen shown:

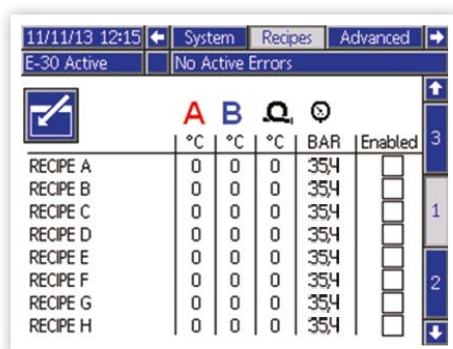
*Drum fluid levels – easy indication when you are running low on chemical. One of many screens available on the ADM.*

## Graco InSite™ Remote Reporting Technology

The power to control your business – wherever you are. The information Graco InSite gathers can save you money, help you bid jobs more accurately and troubleshoot problems more quickly, saving lost overhead and revenue. The data it collects is stored and available anywhere you can access the Internet. For full Graco InSite details and to navigate a demo, visit [gracoinsite.com](http://gracoinsite.com)! Graco InSite is standard on Reactor 2 Elite models.



## Better spray performance



### Precise material application

The ADM lets you store up to 24 material recipes, so switching material spray parameters is fast, easy and trouble-free. By reducing human error in entering set points you're more likely to spray material as the material supplier intended.





## Easier to service

Try it now!



### Reduce your downtime with QR codes

Error codes appear on your ADM with a helpful QR code. The QR codes explain the problem and provide solutions by simply scanning the code with your smart phone or device. The scan takes you directly to [help.graco.com](http://help.graco.com) that provides up-to-date advanced trouble shooting information.

## Peace of mind

### Advanced electronics

Graco designed the electronics in the Reactor 2 systems to a stringent electronics reliability standard. These modules are more robust and able to withstand a wider range of power spikes or surges.



### Sacrificial Surge Protector for added protection

As an added level of protection, Graco also added a sacrificial surge protector to Reactor 2 systems. If there is an excessive power spike, you only have to replace this smaller, less expensive part – not the entire control module. All Reactor 2 models include a spare sacrificial surge protector to get you back up and running immediately.



# Portable & Touch-up Systems

What portable & touch-up systems can do for you:

- **Save time** – get smaller jobs done fast without sacrificing performance
- **Self-contained system** – no transfer pumps required
- **Easy to use** – single knob motor operations
- **Provides consistency** – uses standard spray guns you're familiar with

## Reactor E-10hp

### Fast start-up time for improved productivity

Expand your business with polyurea applications. The Reactor E-10hp sprayer is a smart, affordable investment that will help grow your business. Even though it's an entry level system, it packs plenty of power and uses standard residential electrical outlets – no generator is needed.

#### Low Level Sensors

- Indicates when material is low (3.8 L / 1 gal remaining)
- No contact with materials – prevents build-up

#### Boost Heat

- Directs unused power from the motor circuit to additional heater rods
- Additional heater power brings material to desired temperatures faster during recirculation mode

#### Insulated Tanks

- Double-wall insulated to retain heat
- Smooth interior lining for easy cleaning
- Improved seal design on lid for better moisture control

#### Quick knockdown Lower Pumps

- Easy disassembly and maintenance

#### Temperature Gauges in Y-strainers

- Provides accurate tank temperature readings

#### Digital Heat Controls

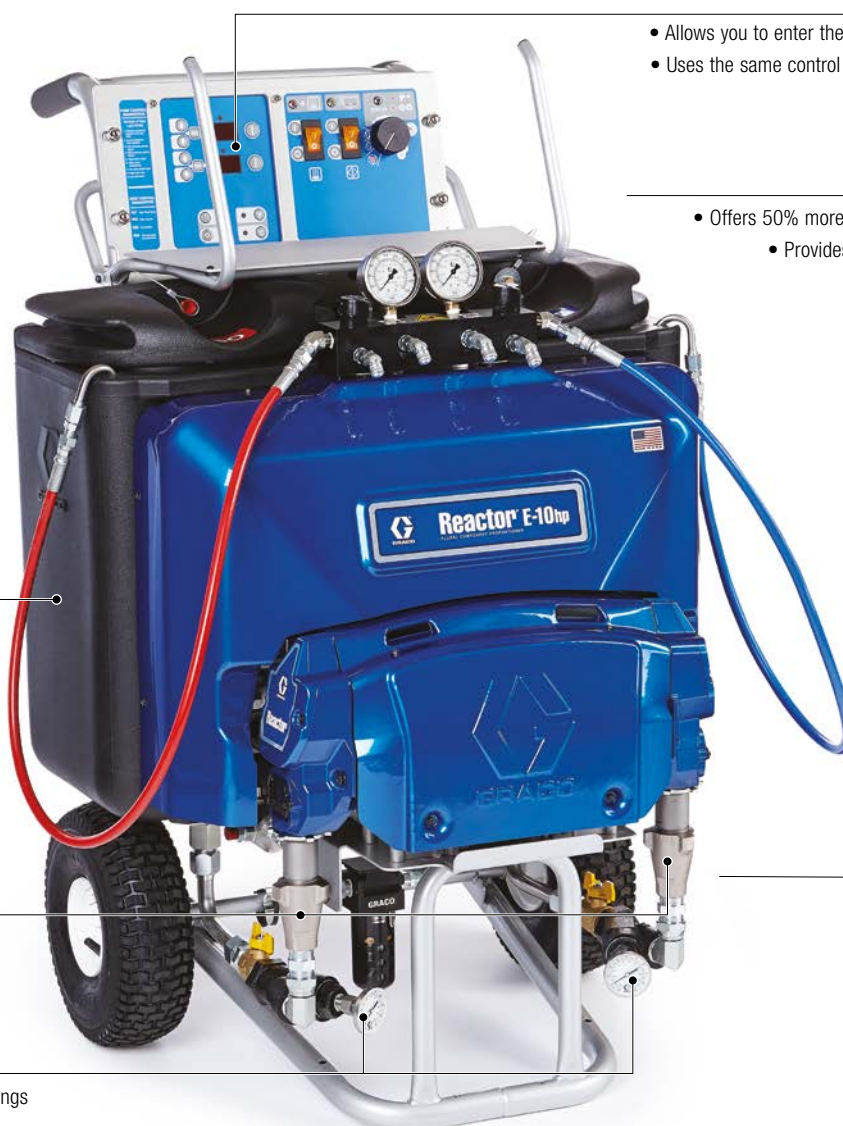
- Allows you to enter the exact temperatures you need
- Uses the same control boards as a standard Reactor

#### Motor

- Offers 50% more power than the Reactor E-10
- Provides improved spray performance with reduced pressure drop

#### Robust Hybrid Heater

- More power, faster material handling means more uptime





## Reactor E-10

### Save up to 30% on material costs compared to disposable foam systems

Reactor E-10 sprayers are ideal for plural-component spray, joint-fill jobs and touch-ups. One person operation saves time and money!

#### Intuitive Controls

- Easy start and stop
- Digital temperature display

#### Heater and Hose

- Gives up to 2000 watts to pre-heat circulating material

#### Electric Motor

- Improved performance
- Reduces operating costs

#### Power

- Electric power is a low draw and plugs into standard outlets



# Entry Level Systems

## Reactor E-20 & E-XP1

### Durability you've come to expect

Equipped with material data and system diagnostics, the Reactor E-20 and E-XP1 systems provide total control for spraying foam insulation and coatings.

#### Reliability

- Powerful hybrid heaters
- Accurate heating with precise temperature sensing

#### Simple Control

- Digital heat and pressure controls

#### Heater Control Boards

- Longer-lasting modular heater
- Minimize downtime

#### Hose Heat Transformer

- Does not require tap settings

#### Pumps

- Quick knockdown for easy maintenance



What an entry level system can do for you:

- **Easy to manoeuvre** – wheeled carts let you get closer to the job
- **Easy to use** – best for low to medium-output applications
- **Affordability** – excellent value for residential and commercial use

### Reactor A-25 & A-XP1

#### Best choice for affordability

The Reactor A-25 and A-XP1 system has the ability to maintain consistent temperature control, even when you're spraying at maximum flow rates – resulting in better quality foam. Have peace of mind with the proven durability of a standard Graco quality air motor.

#### Three Heat Zones

- Three independent heat zones – ISO, resin and hose heat
- Provide accurate heat control for reliable spraying to handle different chemical viscosities
- Digital temperature controls

#### Recirculation Manifold

- A quick, easy way to balance system pressures

#### Hybrid Heater

- Provides better temperature control

#### DataTrak™ Control

- Resettable counter tracks material usage

#### NXT® Air Motor

- Low air consumption for increased efficiency
- Muffler provides low operating noise levels
- Air valve provides smooth and rapid changeover

#### ISO Pump Lube System

- Prevents isocyanate crystallization on the pump seal and shaft

#### Quick Knockdown Pumps

- Allows for easy service
- Fast disassembly





# Mid-production Systems

What an electric system can do for you:

- **Increase productivity** – plenty of power for most residential and commercial applications
- **Smooth and consistent spray pattern** – minimizes pressure fluctuations on pump changeover
- **Free up space in trailer or rig** – smaller footprint when compared to other spray systems

## Reactor 2 Electric Series

### Proven reliability at an outstanding value

With proven reliability the Reactor 2 E-series is the industry's preferred system. Reactor 2 stand-alone models are available in an E-30 and E-XP2 model.

#### Advanced Controls

- Easy to operate Advanced Display Module interface
- Graco InSite – Remote Reporting Technology\*

#### Ergonomic Set-up

- Electronics are above the pumps – comfortable working height for easier service

#### Brushless Electric Motor

- Improved control and performance
- No maintenance needed
- Longer life

#### Easy Troubleshooting Diagnosis

- Troubleshooting Y-strainer for analog temperature and pressure gauges
- Inlet pressures and temperatures sensor are displayed and recorded on ADM and Graco InSite\*

#### Sleek Design

- 40% smaller footprint than traditional Reactor E-30

#### \*Elite Models

- Graco InSite comes factory installed
- Inlet pressure and temperature sensors (interfaces with Graco InSite)
- Xtreme-Wrap™ Scuff Guard on heated hoses when ordered as a package



# High-production Systems

What a hydraulic system can do for you:

- **Dependability** – robust, durable, longest life spray system
- **Reduce downtime** – allows for longer time in between required maintenance
- **Increase daily productivity** – capable of extremely high duty cycle

## Reactor 2 Hydraulic Series

### Highest value for the best performance

Graco's line of hydraulic Reactors brings increased yield and performance to high-output spraying. Ideal for in-plant OEMs or applicators that spray high volume. Reactor 2 stand-alone models are available in an H-30, H-40, H-50, H-XP2 and H-XP3.

#### Advanced Controls

- Easy to operate Advanced Display Module interface
- Graco InSite – Remote Reporting Technology\* (Included on Elite models)

#### Ergonomic Set-up

- Electronics are above the pumps – comfortable working height for easier service

#### Voltage Jumpers

- Available on H-30 and H-XP2 (Inside Electronics Cabinet) allows for one model to be wired to different voltages

#### Horizontal Pump Line

- Slower cycle rate

#### Easy Troubleshooting Diagnosis

- Troubleshooting Y-strainers for analog temperature and pressure gauges
- Inlet pressure and temperature is displayed and recorded on ADM and Graco InSite\*

#### Reversing Sensors

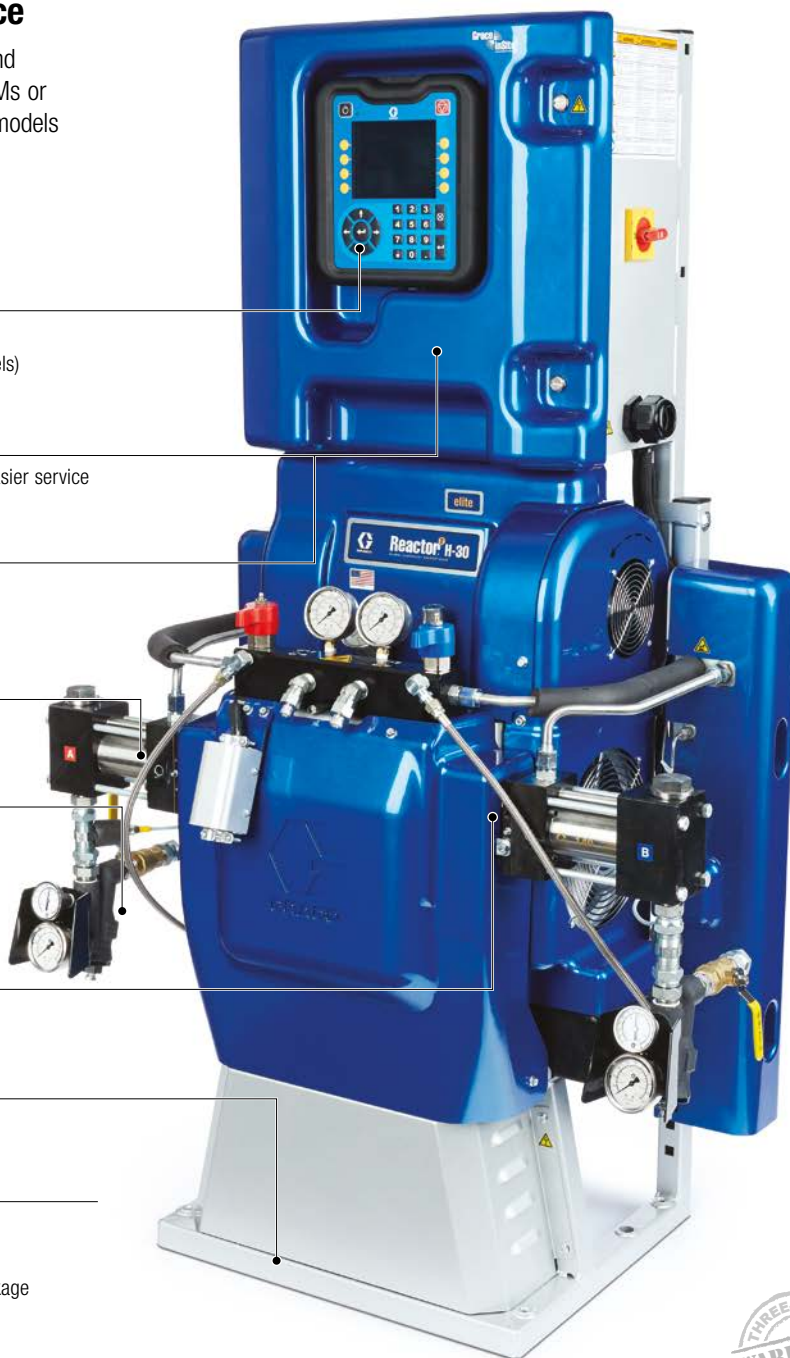
- Non-contact for longer life

#### Consistent Design

- Similar footprint to traditional H-series

#### \*Elite Models

- Graco InSite included
- Inlet pressure and temperature sensors (interfaces with Graco InSite)
- Xtreme-Wrap™ Scuff Guard on heated hoses when ordered as a package



## Revolutionize the way you run your business

Each feature in the Reactor 2 system was strategically designed to help your business run smoothly. Software and hardware enhancements for better spray performance. New technologies that add to your bottom line.

# Turnkey Systems

## Integrated Air Control Panel

- Controls A and B feed pumps, agitator and gun
- One air line connection means less plumbing, less hoses and less assembly time

## Gen Set Controls

- Integrated controls allow for convenient and easy start up
- Engine monitoring functionality

## Heat Recovery System

- Recovers heat from the engine coolant and transfers it to the A and B materials

## Advanced Controls

- Easy to operate Advanced Display Module interface
- Graco InSite – Remote Reporting Technology comes standard

## Easy Troubleshooting Diagnosis

- Troubleshooting Y-strainers for analog temperature and pressure gauges
- Inlet pressures and temperatures sensors are displayed and recorded on ADM and Graco InSite

## Booster Heat

- 4000 watt heater (included on high-heat systems only)

## Fuel Tank

- 83 liter (22-gal) capacity
- Can be remote mounted

## Motor Control

- Consistent pressure at the gun for improved spray performance
- Low-pulse design reduces pump change-over fluctuation



Calculate your savings at [www.graco.com/integrated](http://www.graco.com/integrated)

\*By replacing a standard 40 kw generator with a 22 kw generator, the system's fuel needs are greatly reduced. Savings are an estimate only. Actual savings may vary.



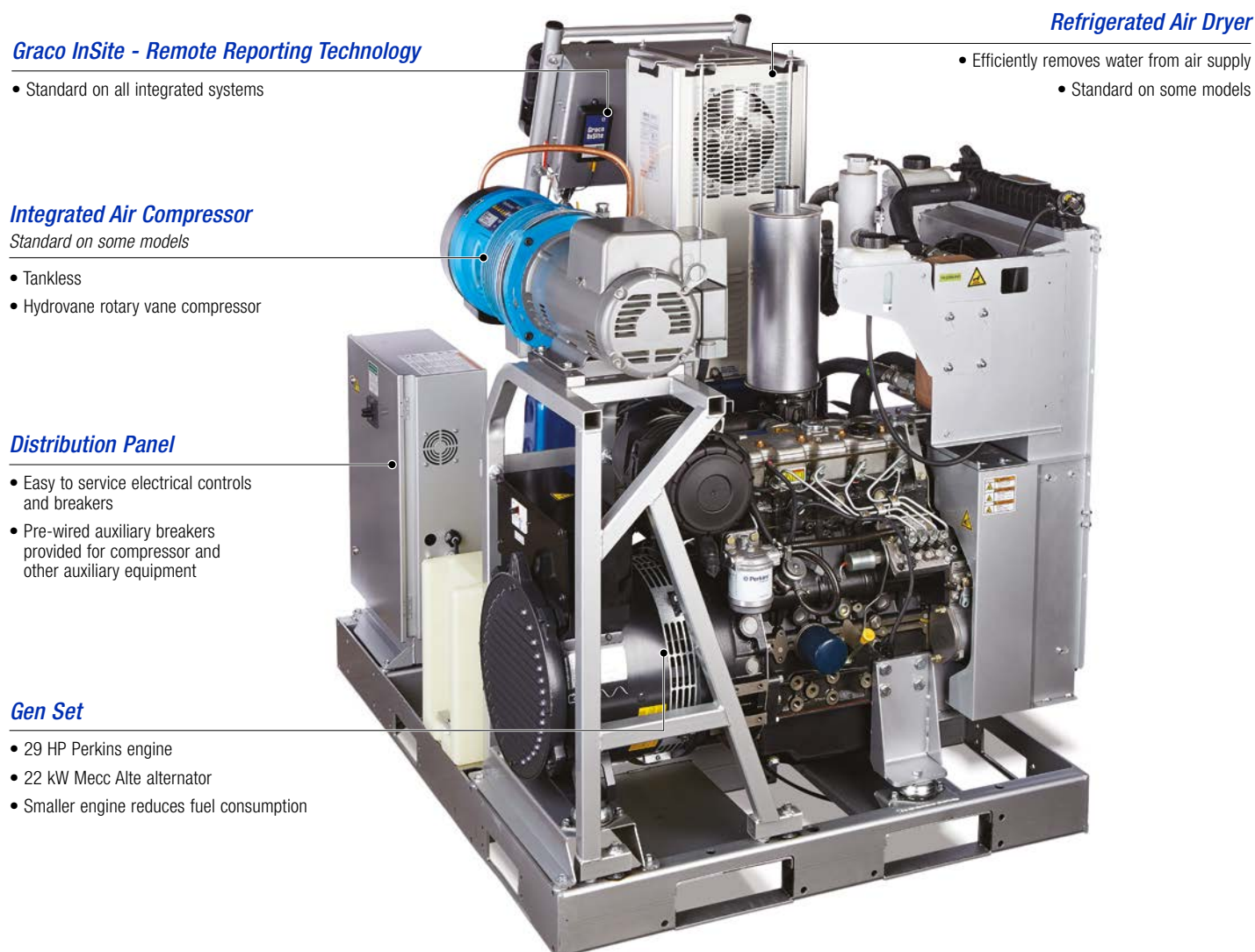
## What a turnkey system can do for you:

- **Save time** – it's easy to install into a spray rig since it's pre-wired with components already selected and installed
- **Save diesel fuel costs** – an average of 50% annually\*
- **Eliminate costly power issues** – associated with shore power and low cost generators
- **Improved heating capacity** – adjust temperatures quickly to minimize downtime during recirc
- **Reduce fuel costs even more** – compact, portable design fits into a smaller trailer; smaller trailer means a smaller truck

### Reactor 2 E-30i and E-XP2i

## Ready for the job site or spray rig – right out of the box

A complete integrated system combines an electric Reactor system, diesel generator, air compressor and air dryer into one package. This patent-pending design provides constant, steady temperature control for superior heating performance without wasting energy. Waste heat from the generator is repurposed to heat the material allowing for a smaller generator.



# Equipment For Spray Foam Applications

Graco Has You Covered



	Air (A Series)		Electric (E Series)	
MODEL	A-25	E-10	E-20	Reactor 2 E-30
<b>Max Working Pressure</b>	138 bar (2000 psi, 13.8 MPa) 800 l/min (28 scfm) air consumption@100 psi	138 bar (2000 psi, 13.8 MPa)	138 bar (2000 psi, 13.8 MPa)	138 bar (2000 psi, 13.8 MPa)
<b>Min Working Pressure</b>	N/A	N/A	N/A	N/A
<b>Max Hose Length</b>	64 m (210 ft)	32 m (105 ft)	64 m (210 ft)	94 m (310 ft)
<b>Max Fluid Temp</b>	88°C (190°F)	71°C (160°F)	88°C (190°F)	88°C (190°F)
<b>Output</b>	11.4 kg (25 lb)/min	5.4 kg (12 lb)/min	9 kg (20 lb)/min	13.6 kg (30 lb)/min
<b>Weight</b>	140.6 kg	Heated: 72 kg Unheated: 68 kg	155 kg	161 kg
<b>Graco InSite Compatible</b>	No	No	Yes	Yes
<b>Ordering Information</b>	<b>With 6.0 kW heater:</b> 262614  <b>*Amps</b> 230V, 1-ph — 40A 230V, 3-ph — 32A 400V, 3-ph — 18.5A	<b>With 1.7 kW heater:</b> 120V, 2-cord 249570  <b>With 2.0 kW heater:</b> 240V, 2-cord 249571  240V, 1-cord 249572  <b>Unheated ambient system:</b> 120V 249576  240V 249577	<b>With 6.0 kW heater:</b> 230V, 1-ph — 48A 259025  230V, 3-ph — 32A 259034  400V, 3-ph — 24A 259030	<b>With 10.2 kW heater:</b> 272110 - Elite 272010 - standard  <b>With 15.3 kW heater:</b> 272111 - Elite 272011 - standard  <b>*Amps</b> <b>10kW:</b> 230V, 1-ph — 78A 230V, 3-ph — 50A 400V, 3-ph — 34A  <b>15kW:</b> 230V, 1-ph — 100A 230V, 3-ph — 62A 400V, 3-ph — 35A
<b>Packages</b>	‡	‡	‡	‡
<b>Operation manual</b>	3A1569	311075	312065	333023
<b>Repair manual</b>	3A1570	311075	312066	333024

\*Reactor systems can be wired for all voltages: 230V - 1ph; 230V - 3ph; 400V - 3ph

‡ Basic packages available

## ‡ Basic packages

Most Reactor systems are available in a basic package, which includes:

- System
- Whip hose
- Spray hose
- Choice of gun Fusion® AP, CS or Probler® P2

To order this package, replace the first two part numbers with the gun type. Fusion AP = AP; Fusion CS = CS; Probler P2 = P2

**For example:** System 272110 in a basic package with a Fusion AP gun, becomes part number AP2110



Electric (E Series)	Hydraulic (H Series)		
Reactor 2 E-30i	Reactor 2 H-30	Reactor 2 H-40	Reactor 2 H-50
138 bar (2000 psi, 13.8 MPa)	138 bar (2000 psi, 13.8 MPa)	138 bar (2000 psi, 13.8 MPa)	138 bar (2000 psi, 13.8 MPa)
N/A	48 bar (700 psi, 4.8 MPa)	41 bar (600 psi, 4.1 MPa)	41 bar (600 psi, 4.1 MPa)
94 m (310 ft)	94 m (310 ft)	125 m (410 ft)	125 m (410 ft)
88°C (190°F)	88°C (190°F)	88°C (190°F)	88°C (190°F)
13.6 kg (30 lb)/min	10.5 kg (24 lb)/min	17 kg (37 lb)/min	20 kg (44 lb)/min
793.7 kg - without compressor 998 kg - with compressor	10 kW: 247 kg 15 kW: 252 kg	272 kg	272 kg
Yes	Yes	Yes	Yes
<b>Without Compressor:</b> 272079 Aux. power available: 52A at 240V 272080 (Booster Heat) Aux. power available: 35A at 240V <b>With Compressor:</b> 272089 Aux. power available: 22A at 240V 272090 (Booster Heat) Aux. power available: 5A at 240V <b>Other Specs:</b> Compressor: Hydrovane 5 HP, 16cfm, 240V, 1-ph, 60 Hz Air Dryer: Hankison, refrigerated 22 scfm, 115V, 1-ph, 60 Hz Engine: Perkins 404-22G, 2.2 L, 29 HP Generator: Mecc Alte 22 kW, 240V, 1-ph, 60 Hz, pancake style	<b>With 10.2 kW heater:</b> 17H131 - Elite 17H031 - standard <b>With 15.3 kW heater:</b> 17H132 - Elite 17H032 - standard <b>*Amps</b> <b>10kW:</b> 230V, 1-ph — 79A 230V, 3-ph — 46A 400V, 3-ph — 35A <b>15kW:</b> 230V, 1-ph — 100A 230V, 3-ph — 59A 400V, 3-ph — 35A	<b>With 15.3 kW heater:</b> 230V, 3-ph — 71A 17H143 - Elite 17H043 - standard <b>400V, 3-ph — 41A</b> 17H145 - Elite 17H045 - standard <b>With 20.4 kW heater:</b> 230V, 3-ph — 95A 17H144 - Elite 17H044 - standard <b>400V, 3-ph — 52A</b> 17H146 - Elite 17H046 - standard	<b>With 20.4 kW heater:</b> 230V, 3-ph — 95A 17H153 - Elite 17H053 - standard <b>400V, 3-ph — 52A</b> 17H156 - Elite 17H056 - standard
‡	‡	‡	‡
332636	334945	334945	334945
332637	334946	334946	334946

\*Reactor systems can be wired for all voltages: 230V - 1ph; 230V - 3ph; 400V - 3ph

‡ Basic packages available

### ‡ Basic packages

Most Reactor systems are available in a basic package, which includes:

- System
- Whip hose
- Spray hose
- Choice of gun Fusion® AP, CS or Probler® P2

To order this package, replace the first two part numbers with the gun type. Fusion AP = AP; Fusion CS = CS; Probler P2 = P2

**For example:** System 272110 in a basic package with a Fusion AP gun, becomes part number AP2110



# Equipment For Coatings Applications

Graco Has You Covered



	Air (A Series)		Electric (E Series)		
MODEL	A-XP1	E-10hp	E-XP1	Reactor 2 E-XP2	Reactor 2 E-XP2i
Max Working Pressure	240 bar (3500 psi, 24.0 MPa)	172 bar (2500 psi, 17.2 MPa)	172 bar (2500 psi, 17.2 MPa)	240 bar (3500 psi, 24.0 MPa)	240 bar (3500 psi, 24.0 MPa)
Min Working Pressure	N/A	N/A	N/A	N/A	N/A
Max Hose Length	64 m (210 ft)	32 m (105 ft)	64 m (210 ft)	94 m (310 ft)	94 m (310 ft)
Max Fluid Temp	88°C (190°F)	77°C (170°F)	88°C (190°F)	88°C (190°F)	88°C (190°F)
Output	5.7 L (1.5 gal) / min	3.8 L (1 gal) / min	3.8 L (1 gal) / min	7.6 L (2 gal) / min	7.6 L (2 gal) / min
Weight	140.6 kg	108 kg	155 kg	159 kg	793.7 kg - w/ compressor 998 kg - w/o compressor
Graco InSite Compatible	No	No	Yes	Yes	Yes
Ordering Information	With 10.2 kW heater: 24Y165  230V, 1-ph — 56A 230V, 3-ph — 46A 400V, 3-ph — 26A	120V 24T100  230V 24T901	With 10.2 kW heater:  230V, 1-ph — 69A 259024  230V, 3-ph — 43A 259033  400V, 3-ph — 24A 259029	With 15.3 kW heater:  272112 - Elite 272012 - standard  *Amps 230V, 1-ph — 100A 230V, 3-ph — 59A 400V, 3-ph — 35A	Without Compressor: 272081 Aux. power available: 35A at 240V With Compressor: 272091 Aux. power available: 5A at 240V Other Specs: Compressor: Hydrovane 5 HP, 16cfm, 240V, 1-ph, 60 Hz Air Dryer: Hankison, refrigerated 22 scfm, 115V, 1-ph, 60 Hz Engine: Perkins 404-22G, 2.2 L, 29 HP Generator: Mecc Alte 22 kW, 240V, 1-ph, 60 Hz, pancake style
Packages	‡	‡	‡	‡	‡
Operation manual	3A1569	332144	312065	333023	332636
Repair manual	3A1570	332144	312066	333024	332637

\*Reactor systems can be wired for all voltages: 230V - 1ph; 230V - 3ph; 400V - 3ph

‡ Basic packages available

## ‡ Basic packages

Most Reactor systems are available in a basic package, which includes:

- System
- Whip hose
- Spray hose
- Choice of gun Fusion® AP or Probler® P2

To order this package, replace the first two part numbers with the gun type. Fusion AP = AP; Probler P2 = P2

For example: System 272112 in a basic package with a Fusion AP gun, becomes part number AP2112

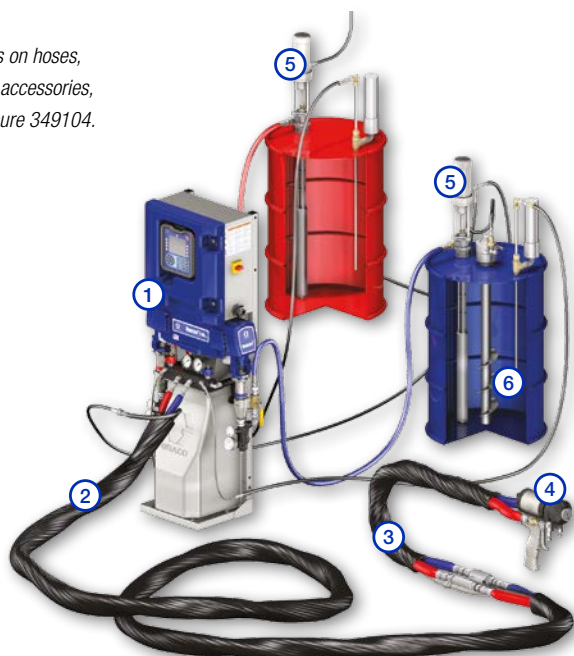
Coating units are not equipped with the Fusion CS gun

# Build a complete system!



Hydraulic (H Series)	
Reactor 2 H-XP2	Reactor 2 H-XP3
240 bar (3500 psi, 24.0 MPa)	240 bar (3500 psi, 24.0 MPa)
83 bar (1200 psi, 8.3 MPa)	59 bar (850 psi, 5.9 MPa)
310 ft (94 m)	125 m (410 ft)
88°C (190°F)	88°C (190°F)
4.8 L (1.25 gal) / min	9.0 L (2.4 gal) / min
252 kg	272 kg
Yes	Yes
<b>With 15.3 kW heater:</b> 17H162 - Elite 17H062 - standard  <b>*Amps</b> 230V, 1-ph — 100A 230V, 3-ph — 59A 400V, 3-ph — 35A	<b>With 20.4 kW heater:</b> 230V, 3-ph — 95A 17H174 - Elite 17H074 - standard  400V, 3-ph — 52A 17H176 - Elite 17H076 - standard
‡	‡
334945	334945
334946	334946

For details on hoses,  
guns and accessories,  
see brochure 349104.



## 1 SELECT A SYSTEM

Choose an air, electric or hydraulic model.

### KEY FEATURES:

- Optional data reporting capabilities
- Foam models rated at 138 bar (2000 psi, 13.8 MPa)
- Coatings models rated up to 240 bar (3500 psi, 24.0 MPa)

## 2 SELECT HEATED HOSES

Choose from pressure ratings of 138 to 240 bar  
(2000 psi or 3500 psi, 13.8 to 24.0 MPa).  
Choose 3/8 in or 1/2 in ID.

## 3 SELECT HEATED WHIP HOSE

Choose from pressure ratings of 138 to 240 bar  
(2000 psi or 3500 psi, 13.8 to 24.0 MPa).  
Choose 1/4 in or 3/8 in ID.

## 4 SELECT A GUN

Choose an air-purge, mechanical-purge or liquid-purge gun  
with a round or flat pattern.

## SELECT SUPPLY PROCESSING EQUIPMENT

## 5 SUPPLY PUMP

Choose from diaphragm or piston pumps for standard  
materials in drum-mount or wall-mount. Select a 2:1  
piston pump for materials with higher viscosities.

## 6 AGITATOR KITS

Choose a kit to agitate your resin for a consistent coating.  
Graco's patented Twistork® agitators are very low shear to  
minimize material frothing.



## ABOUT GRACO

Founded in 1926, Graco is a world leader in fluid handling systems and components. Graco products move, measure, control, dispense and apply a wide range of fluids and viscous materials used in vehicle lubrication, commercial and industrial settings.

The company's success is based on its unwavering commitment to technical excellence, world-class manufacturing and unparalleled customer service. Working closely with qualified distributors, Graco offers systems, products and technology that set the quality standard in a wide range of fluid handling solutions. Graco provides equipment for spray finishing, protective coating, paint circulation, lubrication, and dispensing sealants and adhesives, along with power application equipment for the contractor industry. Graco's ongoing investment in fluid management and control will continue to provide innovative solutions to a diverse global market.

## GRACO LOCATIONS

### MAILING ADDRESS

P.O. Box 1441  
Minneapolis, MN 55440-1441  
Tel: 612-623-6000  
Fax: 612-623-6777

### AMERICAS

#### MINNESOTA

Worldwide Headquarters  
Graco Inc.  
88-11th Avenue N.E.  
Minneapolis, MN 55413

### EUROPE

#### BELGIUM

European Headquarters  
Graco BVBA  
Industrieterrein-Oude Bunders  
Slakweidestraat 31  
3630 Maasmechelen,  
Belgium  
Tel: 32 89 770 700  
Fax: 32 89 770 777

### ASIA PACIFIC

#### AUSTRALIA

Graco Australia Pty Ltd.  
Suite 17, 2 Enterprise Drive  
Bundoora, Victoria 3083  
Australia  
Tel: 61 3 9468 8500  
Fax: 61 3 9468 8599

#### CHINA

Graco Hong Kong Ltd.  
Shanghai Representative Office  
Building 7  
1029 Zhongshan Road South  
Huangpu District  
Shanghai 200011  
The People's Republic of China  
Tel: 86 21 649 50088  
Fax: 86 21 649 50077

### INDIA

Graco Hong Kong Ltd.  
India Liaison Office  
Room 432, Augusta Point  
Regus Business Centre 53  
Golf Course Road  
Gurgaon, Haryana  
India 122001  
Tel: 91 124 435 4208  
Fax: 91 124 435 4001

#### JAPAN

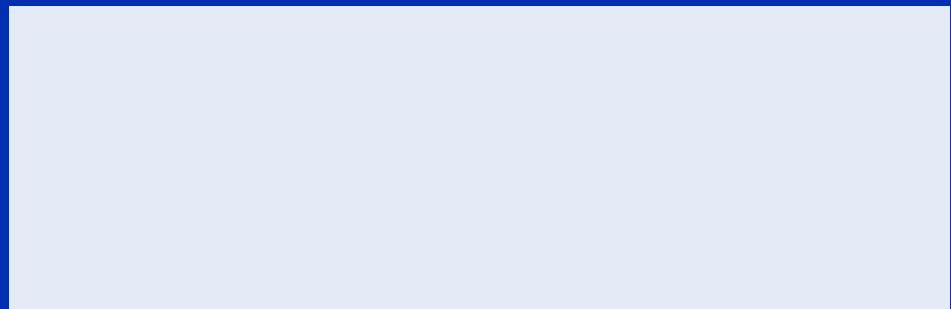
Graco K.K.  
1-27-12 Hayabuchi  
Tsuzuki-ku  
Yokohama City, Japan 2240025  
Tel: 81 45 593 7300  
Fax: 81 45 593 7301

#### KOREA

Graco Korea Inc.  
Shinhan Bank Building  
4th Floor #1599  
Gwangyang-Dong, Dongan-Ku,  
Anyang-si, Korea 431-060  
Tel: 82 31 476 9400  
Fax: 82 31 476 9801

All written and visual data contained in this document are based on the latest product information available at the time of publication. Graco reserves the right to make changes at any time without notice.

Graco is certified ISO 9001.



Europe  
+32 89 770 700  
FAX +32 89 770 777  
WWW.GRACO.COM

©2015 Graco BVBA 300615ENEU Rev.K 01/16 Printed in Europe.  
All other brand names or marks are used for identification purposes and are trademarks of their respective owners.